

January 26, 2022



# St. John Catholic School

*Educational Ministry of St. John The Baptist Parish*



## **ON THE HORIZON:**

**Sunday, January 30<sup>th</sup> –**

**Friday, February 4<sup>th</sup>**

Catholic Schools' Week

\*Please refer to the flyer below  
for daily  
themes and activities

**Sunday, January 30<sup>th</sup>**

Catholic Schools' Week Mass  
9:30am

All families welcomed  
Students encouraged to wear  
inform

Open House

10:30am – 12:30pm

\*For prospective families, by  
appointment

**Tuesday, February 1<sup>st</sup>**

First Day of Black History  
Month

Lunar New Year

**Friday, February 4<sup>th</sup>**

Minimum day- 12:00pm  
dismissal

Dear Shamrock Family,

It is encouraging to communicate that all classes are back onsite for in-person learning! Over the weekend there was one new positive Covid-19 case among the kindergarten class, but to date there seems to have been zero transmission from that case and no other cases to report at this time. At the beginning of January, as you may recall me sharing, our school obtained 150 rapid test kits for students. Our school administration has strategically provided these tests to students in response to concern pertaining to exposure, and in an effort to track transmission within individual classes, as well as across siblings and grades. These tests have been invaluable toward our ability to navigate infection and send students home prior to further transmission. We will continue to distribute the remaining test kits in the same fashion, with necessity and equity in mind.

Yesterday, the state provided our school with 3 N-95 masks per student and staff member. While I am not certain that these masks will effectively fit every size face, I provided these masks to each teacher to distribute to each student. Today, three masks may be found in your child's backpack and have been provided for your child's and/or your family's use.

With Care,  
Ms. Paige Child  
[pchild@csdo.org](mailto:pchild@csdo.org)

### **HELP MARKET OUR SCHOOL:**

We invite school families to help market our school by posting the flyer included below on your own social media platforms. We encourage you to include messages about your own positive experiences with our school, as well as invitations to your friends to visit our school's website and inquire about information or a tour. Let's grow our shamrock family!

### **SHAMROCK SHOUTOUT:**

We offer a special shamrock shout out to **Noel Reyes**. Thank you Mr. Reyes for offering services toward the repair and repainting of the exterior window frames facing the school play yard! Thank you to **Jose Gonzalez** for hauling off a whole trailer full of old, broken furniture and miscellaneous items! We also thank the following parents for sharing their testimonies and helping to market our school by speaking at last weekend's masses in promotion of our upcoming open house. Thank you to: **Ricca Espiridion, Rezena Aceret, Cris Beers, and Katia Ramirez!**

### **CATHOLIC SCHOOLS' WEEK & OPEN HOUSE:**

Catholic Schools' Week 2022 will begin on Sunday, January 30<sup>th</sup> with an all-school mass at 9:30am.

Our typical Open House will be postponed until sometime this Spring.

We will be welcoming prospective families to come take a tour of our school on Sunday, January 30<sup>th</sup>. If you know anyone that may be interested in touring our school, please invite them to email [info@sjcsedu.org](mailto:info@sjcsedu.org) to set up an appointment. Also, make sure they tell us that you referred them, as we will be offering incentives to families who refer new students.

### **NEW PROTOCOL FOR SYMPTOMATIC STUDENTS:**

If a student is experiencing symptoms related to COVID-19, you will need to keep your student home and notify the school office. There are 3 options to clear your student to return to school:

- 1.) Provide a doctor's note stating the symptoms are not related to COVID-19
- 2.) Provide a negative result from a PCR COVID-19 test
- 3.) [FDA approved antigen test](#) if the test comes back negative, a second test will need to be administered 24 to 48 hours later. Antigen tests may not detect infection in the early stages, so a confirmation test is required. To use an antigen test to return to school you must provide the following to the office: a picture of the test card results with the name of your student and the date both tests were administered.

### **DINE-OUT EVENT HOSTED BY STRAW HAT PIZZA**

We'll have our annual Catholic Schools' Week "Dine Out" event on Wednesday February 2nd at **San Lorenzo Straw Hat Pizza** located at 15922 Hesperian Blvd. San Lorenzo, CA 94580. Be sure to tell them that you are from St. John Catholic School when you place your order. 20% of all regular price purchases will be donated to our school.

### **STUDENT VACCINATION CARDS:**

Parents, in order for us to properly follow Covid-19 isolation and quarantine protocols, we will need to be aware of which students are fully vaccinated or not. If and when your child is fully vaccinated, please send a copy of your child's vaccination card to Ms. Aimee- [asire@csdo.org](mailto:asire@csdo.org). You are welcome to stop by the office to have a copy made and placed on file for you as well.

**SCRIP FUNDRAISING:**

Have you ever wondered what SCRIP is and how it benefits St. John Catholic School?

What? Scrip is Fundraising While You Shop®, it turns everyday shopping into cash for your organization when families use retail gift cards to pay for everyday purchases (like gas and groceries) instead of the usual credit/debit card or other money.

**How?** Profits from your purchases count toward your family's annual \$300 fundraising obligation. Be sure to pay attention to the percentage that each card earns to accurately calculate your contributions.

Please refer to [www.shopwithscrip.com](http://www.shopwithscrip.com) for a complete list of participating vendors. Orders can be placed through Shop with SCRIP's website or the attached paper form. SCRIP orders are due on January 27, 2022. Please contact Ms. Aimee at [asire@cndo.org](mailto:asire@cndo.org) for more information on how to enroll online.

**FAITH FORMATION:**

*3-minute retreat-*

<https://www.loyolapress.com/retreats/do-not-be-afraid-start-retreat/>

**HEALTH & WELLNESS:**

*Free, at-home rapid tests:*

<https://special.usps.com/testkits>

A Prayer for  
*Catholic Schools*



Almighty God,

You sent forth your Son as a beacon of hope for all people.

As Teacher, he has given us the prime example of the importance of education. As disciples, we look to him for inspiration and strength.

Thank you for the many people who have dedicated their lives in service to our Catholic schools.

Thank you for the teachers and administrators who sustain our schools.

Thank you for the parents who have given support and witness to the importance of Catholic education.

Thank you for the students who work hard to further their education.

Bless Regis Jesuit High School and the many people who advance our mission.

May our school be a home for those who seek to grow in openness, faith, love, intellect and commitment to justice.

In your name, we pray. Amen.



# ENROLL NOW!

Now accepting TK-8<sup>th</sup> grade applications for the 2022-2023 school year



**Find Faith, Love, Knowledge and Purpose through Jesus Christ.**

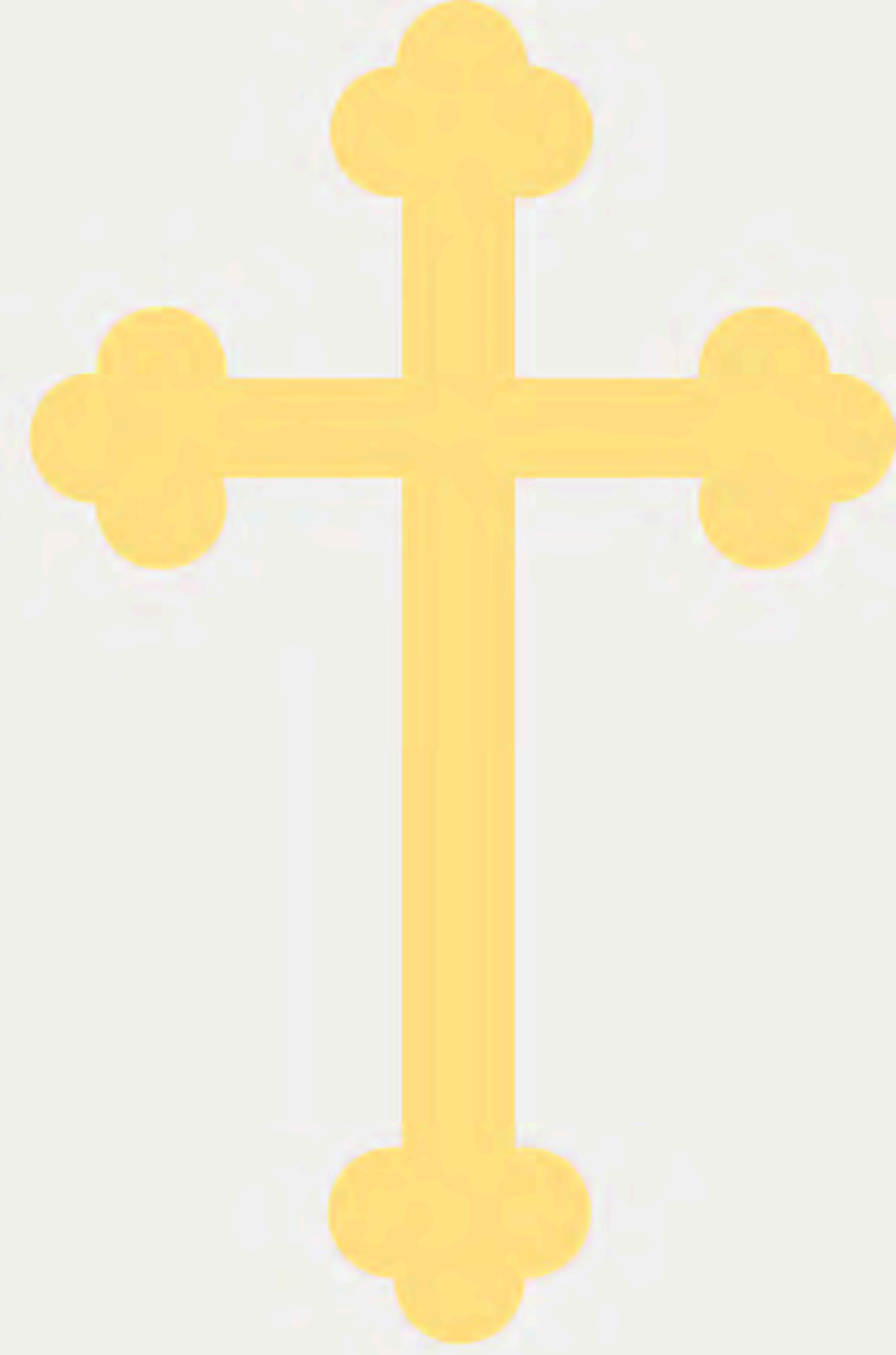
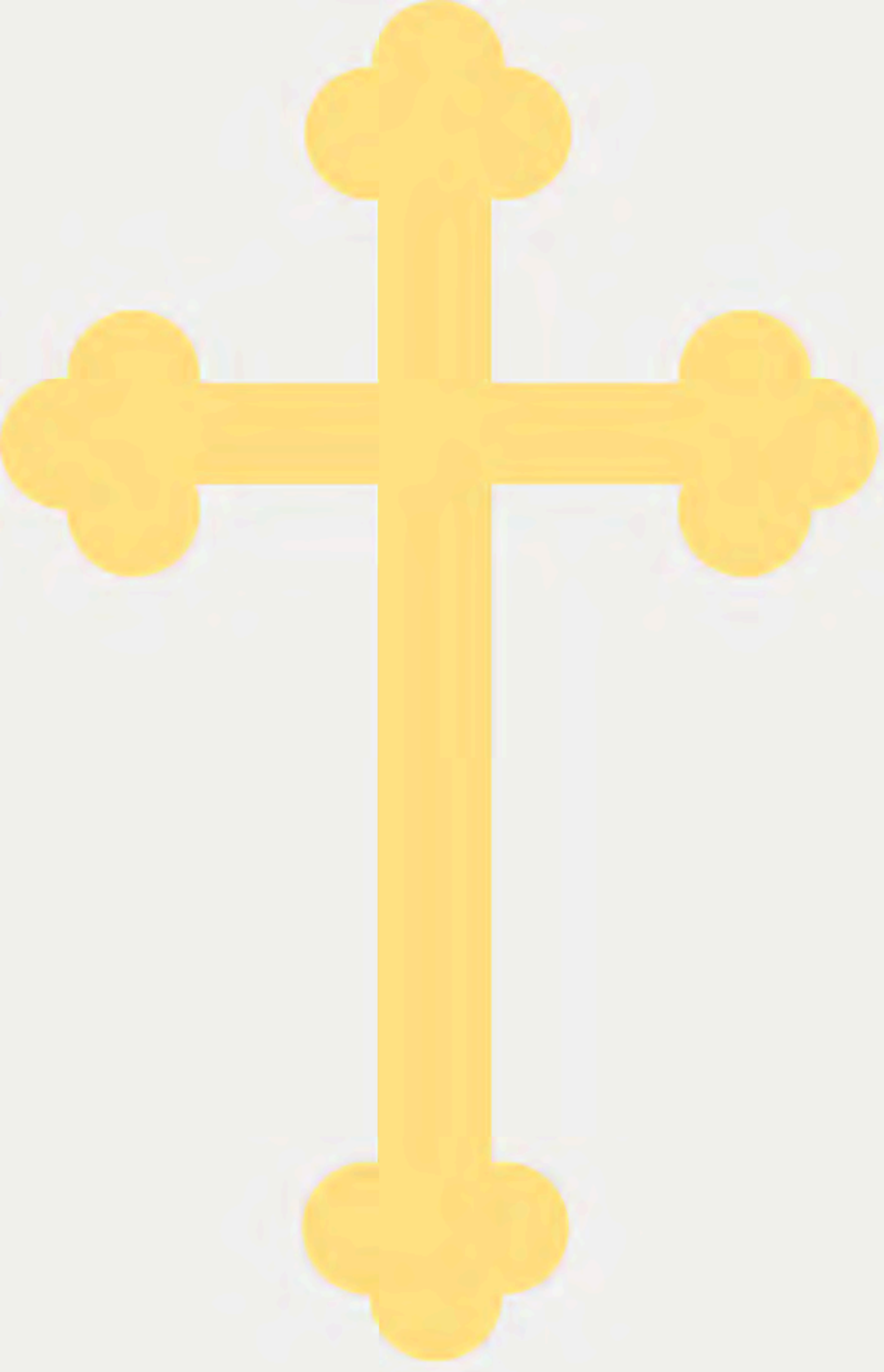
270 E. Levelling Blvd. San Lorenzo, CA

(510) 276-6632 ~ [www.stjohncatholicsschool.org](http://www.stjohncatholicsschool.org) ~ [info@sjcsedu.org](mailto:info@sjcsedu.org)

**Call or email for more information or to schedule a tour.**



**Academic Excellence, Faith Formation, and Service to the Community Since 1952**



# **Catholic Schools' Week**

**ST. JOHN CATHOLIC  
SCHOOL**

**MONDAY- SPIRIT DAY**

**WHAT TO WEAR: ST. JOHN  
SPIRIT ATTIRE OR GREEN  
EVENT: BINGO**

**TUESDAY- CRAZY DAY**

**WHAT TO WEAR: BACKWARDS CLOTHES, NOT MATCHING  
CLOTHES, NEON COLORS, CRAZY HAIR, ETC  
EVENT: BLOCKET/KAHOO COMPETITION BY LEVEL**

**WEDNESDAY- PAJAMA DAY**

**WHAT TO WEAR: PAJAMAS [NO SLIPPERS]  
EVENT: CLASS MOVIE**

**THURSDAY- DISNEY/SUPERHERO DAY**

**WHAT TO WEAR: DISNEY OR SUPERHERO  
THEMED CLOTHING  
EVENT: CLASS DOOR DECORATING  
CONTEST**

**FRIDAY- OLYMPIC DAY**

**WHAT TO WEAR: CLASS SHIRT [OR CLASS  
COLOR]**

**EVENT: OLYMPIC COMPETITION**

# COVID-19 Flowchart for Parents

Updated 1/19/22

Begin with the teal box and follow the arrows, answering the questions for your situation.

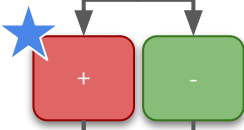
These protocols are based on guidance provided by California Department of Public Health (CDPH)

**My child has a symptom of COVID-19**  
Vaccinated or Unvaccinated

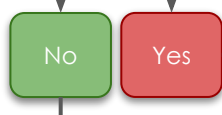
**Isolate**

Get tested

Get healthcare provider\* note of alternative diagnosis



Did you get symptoms while you were in quarantine?  
*Only applies if you started in scenario 2*



Finish Quarantine (go to scenario #1 on page 2)

Return to school when

- Fever is gone for at least 24 hours (without use of medicine)
- Child symptoms have resolved or child feels better

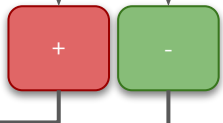


Return to school on day 6 or later depending on when the negative result is received. Wear a well-fitting mask around others for 10 days, especially in indoor settings

No additional test to release

No test to release

Isolate for a minimum of 5 days. Get tested on or after day 5, to return to school before day 11



Remain in Isolation without testing

Return to school on day 11

- When fever is gone for at least 24 hours (without use of medication)
- Symptoms have resolved



## KEY DEFINITIONS

### COVID -19 Symptoms

- Fever or chills
- Sore throat
- Cough
- New loss of taste or smell
- Headache
- Nausea or vomiting
- Diarrhea
- Shortness of breath or difficulty breathing
- Congestion or runny nose
- Fatigue
- Muscle or body aches

### Quarantine

Restricts the movement of persons who were exposed to COVID-19 in case they become infected.

### Isolation

Separates those infected with COVID-19 from people who are not infected.



For all scenarios, wear a well-fitting mask around others at all times, especially indoors, for 10 days after exposure, showing symptoms, or a positive test.



\*Healthcare Provider: doctor, nurse practitioner, or certified physician assistant

# COVID-19 Flowchart for Parents

Updated 1/19/22

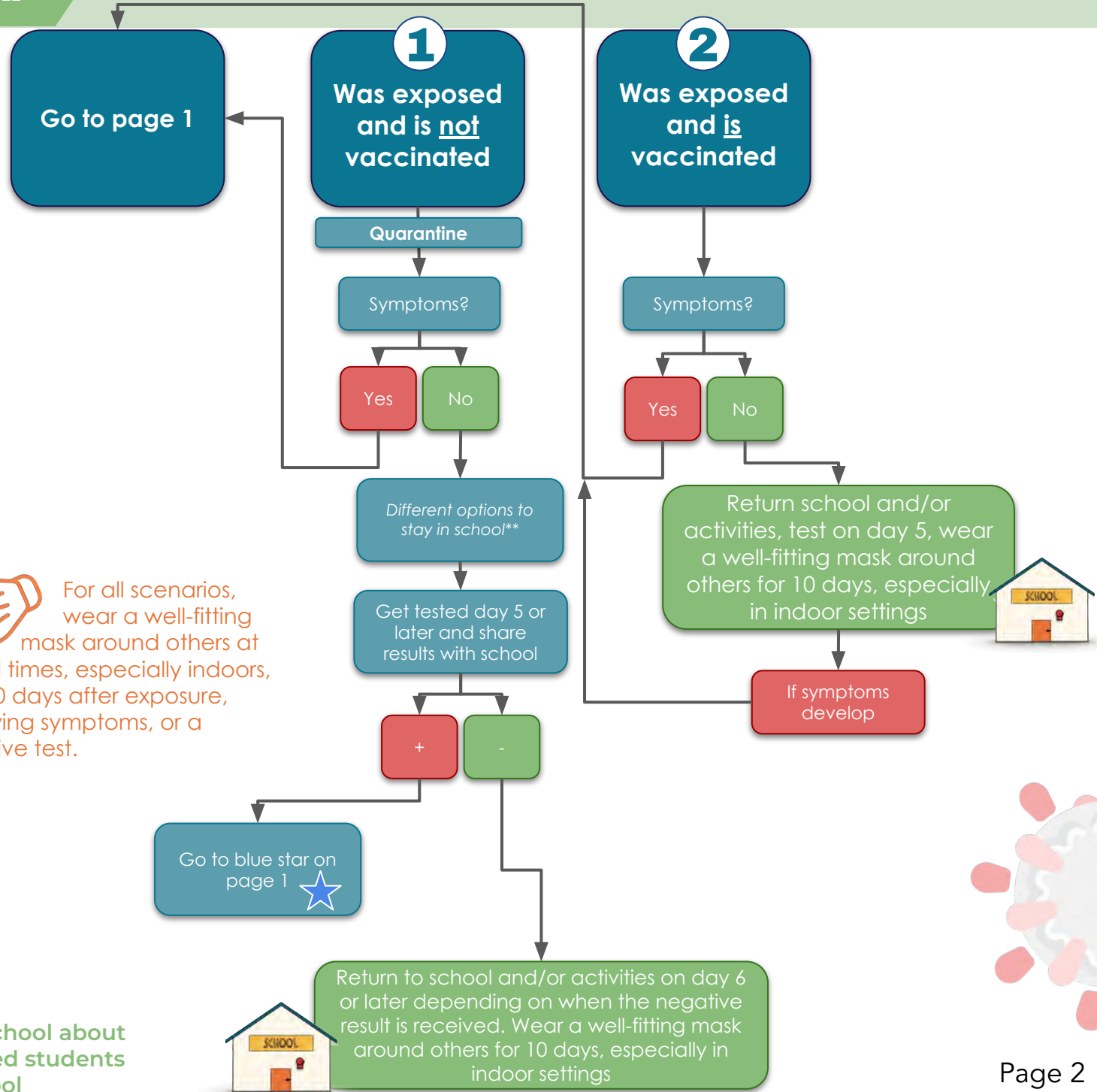
## MY CHILD...

These protocols are based on guidance provided by California Department of Public Health (CDPH)

Begin with scenario 1 or 2 and follow the arrows, answering the questions for your child's situation.



For all scenarios, wear a well-fitting mask around others at all times, especially indoors, for 10 days after exposure, showing symptoms, or a positive test.



\*\*Talk to your school about whether exposed students can stay in school



**SCRIP ORDER 2021 - 2022**

Family Name \_\_\_\_\_

Name & Grade of oldest child \_\_\_\_\_

\*\*\*\*Orders Due by January 27, 2022.

Entertainment	%	\$	QTY	Net \$
Century Theaters	4%	\$25		
Century Theaters Single Admit	8.5%	\$11		
Gas	%	\$	QTY	Net \$
Arco	1.5%	\$50		
	2.5%	\$250		
76	1.5%	\$25		
		\$100		
Shell	1.5%	\$50		
		\$100		
Grocery	%	\$	QTY	Net \$
Lucky/Savemart	2%	\$25		
		\$100		
Safeway	4%	\$25		
		\$100		
Smart & Final	3%	\$25		
		\$100		
Target	2.5%	\$25		
		\$100		
Sprouts Farmers Market	5%	\$25		
		\$100		

Fast Food/Restaurant	%	\$	QTY	Net \$
Applebee's	8%	\$25		
Chipotle	10%	\$10		
IHOP	8%	\$25		
Olive Garden	8%	\$25		
Starbucks Coffee	4.5%	\$10		
		\$25		
Retail	%	\$	QTY	Net \$
Amazon.com	2%	\$25		
		\$100		
Old Navy	14%	\$25		
		\$100		
Macy's	10%	\$25		
		\$100		
Marshall's/TJ Maxx	7%	\$25		
Ross	8%	\$25		
Dick's Sporting Goods	8%	\$25		
		\$100		
Walgreens	5%	\$25		
		\$100		

Please refer to [www.shopwithscrip.com](http://www.shopwithscrip.com) for a complete list of participating vendors.

Write In Orders** (use back side of form if needed)	%	\$	QTY	Net \$

*Payment must be included with this form. Make checks payable to St. John Catholic School  
Turn completed forms to School Office or send back in with your student.  
Orders will be ready in about 1 week.*

Cash    Check # \_\_\_\_\_

**Orders Due by THURSDAY, January 27, 2022 10:00 AM.**

**TOTAL \$** \_\_\_\_\_

- I will pick up my Scrip Order at the school office    I will pick up my Scrip Order at SEP  
 Please send home Scrip Order with eldest child

Purchased By (please print) \_\_\_\_\_ Phone # \_\_\_\_\_

*I understand that Scrip is like cash and St. John Catholic School is not responsible if your Scrip order is lost or stolen.*

Signature \_\_\_\_\_ Date \_\_\_\_\_